

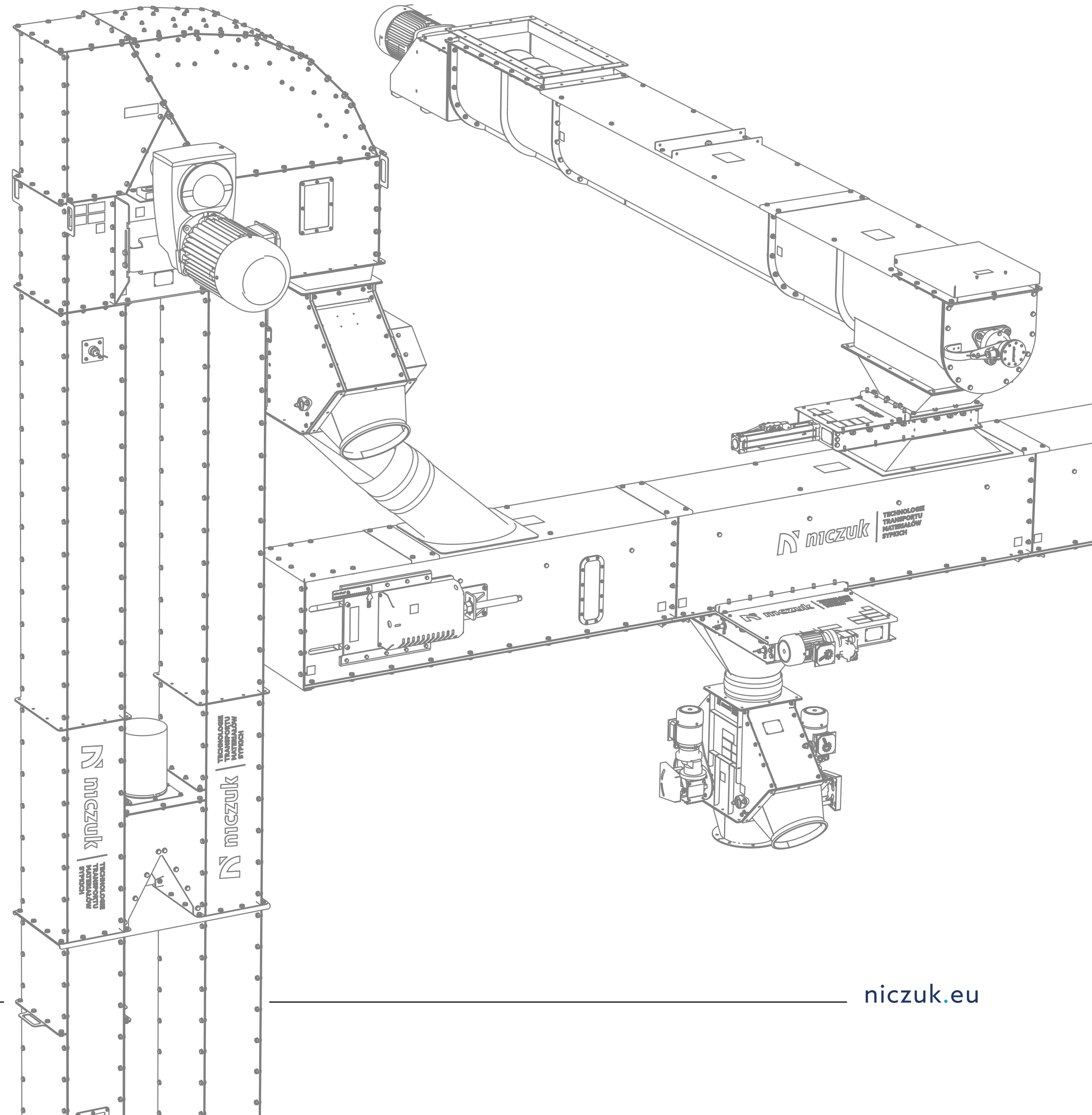


**DZIEŃ DOBRY!
WE COME
FROM POLAND.**



What we do?

- Chain conveyors
- Conveyor chains
- Bucket elevators
- Mobile conveyors
- Redler outlet slide gate
- Two-way directional distributors
- Screwconveyors
- Silo outlet slide gate
- Three-way directional distributors



About us.

THALE Sp. z o.o. Sp. k. Company

Owner of the NICZUK brand. Is a manufacturer of chain conveyors and other bulk material transport equipment. We have been designing and manufacturing high quality devices, many of which are still in operation, since 1980.

We produce in Poland

All our devices are manufactured in Poland. Direct supervision at each stage of the production process guarantees the highest quality and durability of the product.

Cooperation with the best

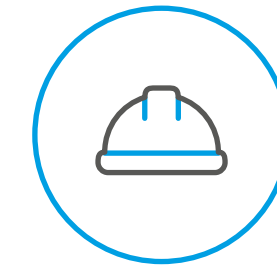
Over several decades of our activity we have delivered equipment to many customers who are leaders in their industries. Attention to detail and constant improvement of products have made NICZUK brand a synonym for durability. We provide support in the assembly and service of manufactured equipment.





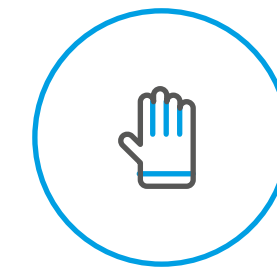
We support you at every stage of your investment

We focus on comprehensiveness – we provide technical support, think strategically and, based on the conditions on site, propose optimal solutions to meet the needs of our customers' companies.



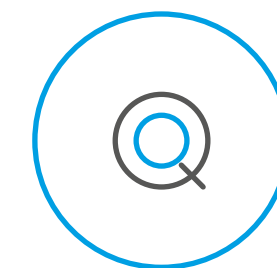
• Experienced specialists

We are an established brand on the Polish grain and milling market. The combination of the knowledge gained in working for the largest companies in Poland guarantees professional and reliable service for our customers.



• Projects support

We offer technical advice and support for constructors in the selection of conveyor technology. We select products with a view to adapting the new conveyor to the existing installation.



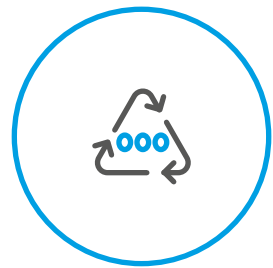
• Quality control

The assurance of constant and highest quality is guaranteed through constant supervision over the implementation processes, technical documentation and verification of supplied materials. Raw materials and semi-finished products are subject to quality control.



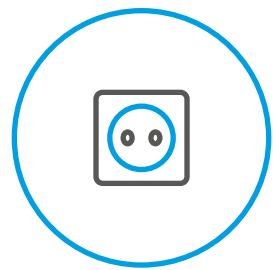
We care about the environment

Environmental protection is an important part of the company policy. We implement a number of green projects and carry out activities aimed at reducing the consumption of energy maintaining the machinery park in perfect condition.



• Waste management and secondary raw materials

We plan, design and implement measures to reduce waste and its negative impact on the environment. Our waste management is very effective – we minimize waste generation “at source”. We recycle 97% of our waste. Metal scrap, waste paper, plastic waste.



• Electricity

Electricity is the main medium consumed by the plant. We constantly strive to reduce electricity consumption by replacing power consumers, motors, hydraulic pumps, using reactive power and modernizing lighting.



• Selection of clean materials

We make every effort to use environmentally friendly raw materials and materials. We use the highest quality raw materials for production, taking into account their chemical composition and possible environmental impact.



Our latest projects.









 **niczuk** | TECHNOLOGIE
TRANSPORTU
MATERIAŁÓW
SYPKICH







niczuk

niczuk



niczuk.eu

Chain conveyors.

Application

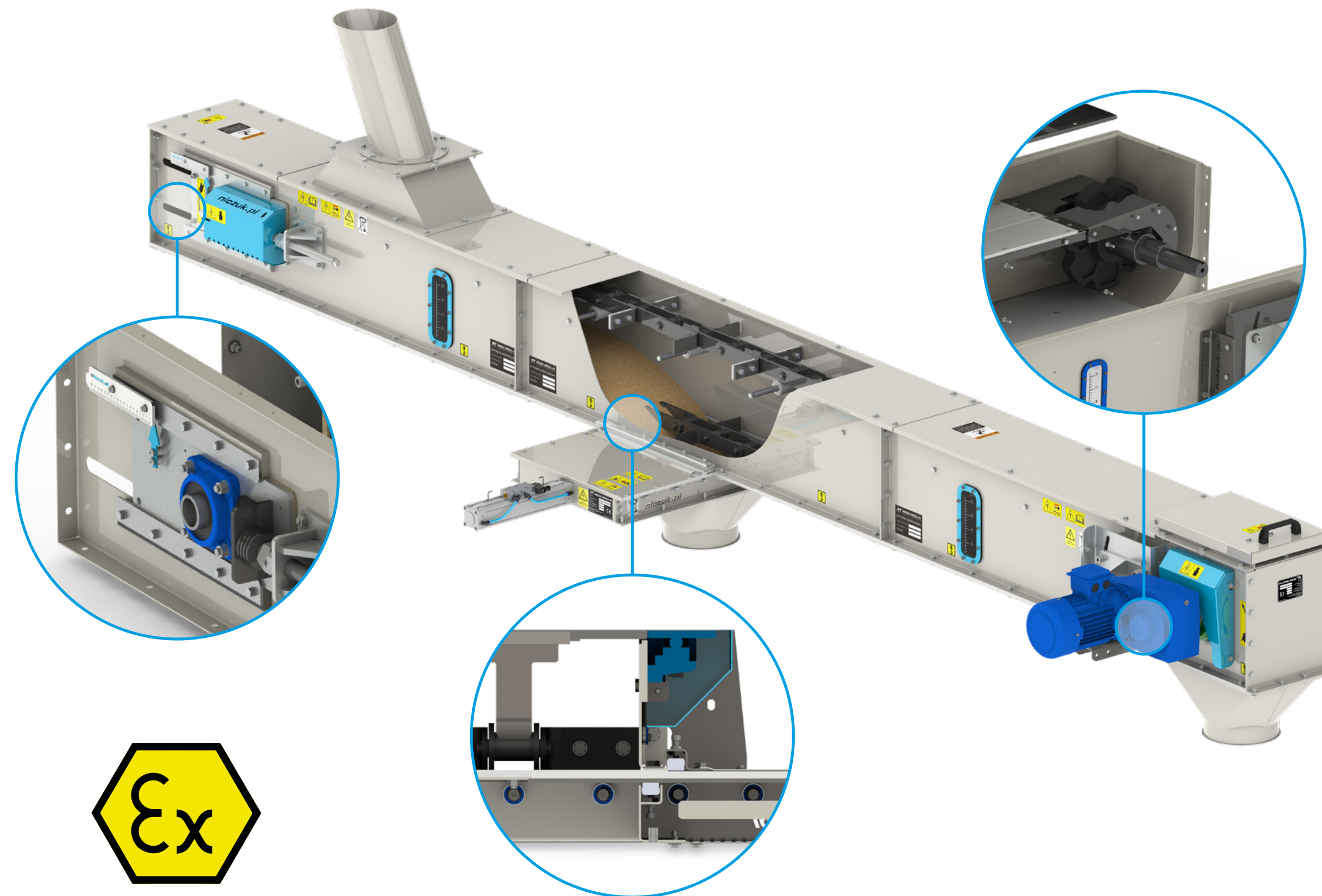
NICZUK devices are used in the transport of bulk materials such as: grain, pulses and oilseeds, sawdust, fodder and biomass. They are most often used in oil mills, mills, feed mixing plants, port handling and grain and biomass warehouses.

Construction

The evidence of NICZUK products quality is the most stable construction of the drive system, which guarantees reliable operation for years. Thick cross-sections of the materials used throughout the machine ensure the rigidity of the structure and reduce the noise generated during operation.

Characteristics

Depending on the medium, the conveyors can transport material at an angle of up to 20°. The devices use NORD and SEW gear motors. The offer includes conveyors with a capacity of up to 300 tons.



ATEX-certified conveyors

Equipment for feed plants, mills and elevators are in constant contact with grain dust, which, when achieving certain concentration, can create an explosive atmosphere. The ATEX EX II 2D certificate is a guarantee of safe operation of equipment.



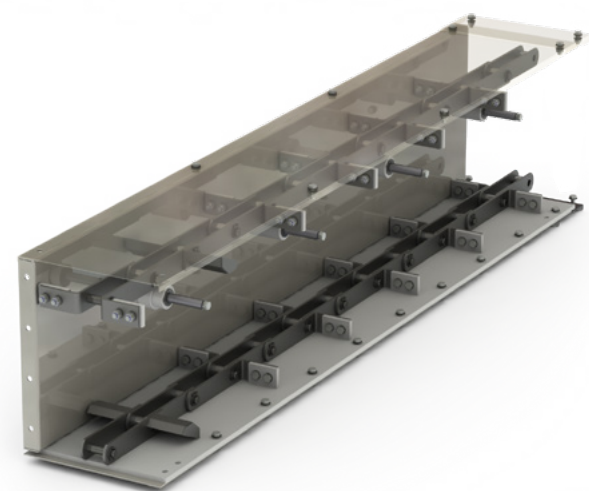


niczuk

TECHNOLOGIE
TRANSPORTU
MATERIAŁÓW
SYPKICH

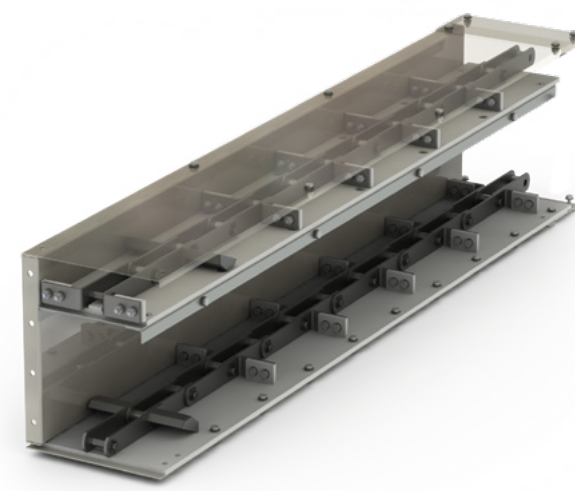
niczuk.eu

Intermediate trough versions.



Standard version – roller chain return

In standard systems, roller chain return is used. They are made of PA6G, which guarantees long-term reliability under typical operating conditions. The 1,900 mm long intermediate trough is equipped with four rollers: one guiding, stepped with a centering ridge and three smooth rollers. As the roller is mounted on a steel axle, it is easy to replace without the need to dismantle other elements of the conveyor body.



Self-cleaning

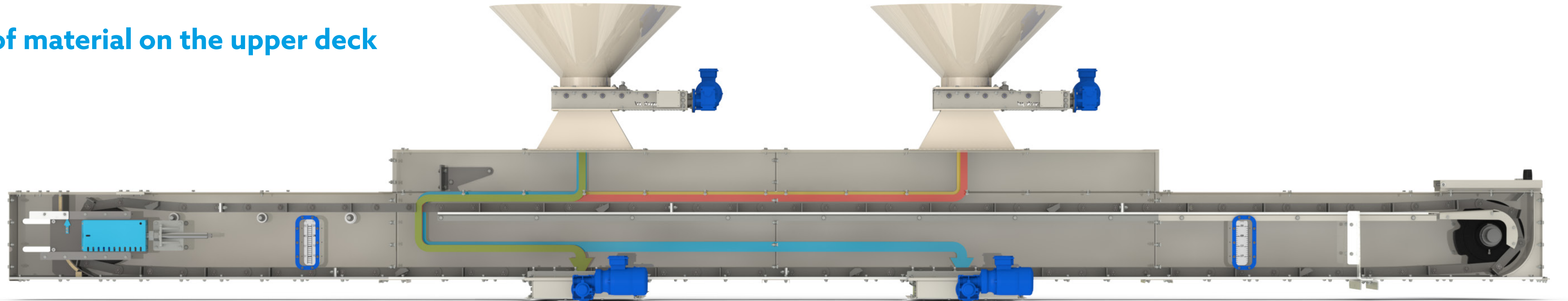
Thanks to the use of rounded walls of the drive and return station and chain with sections equipped with buckets, we can eliminate the problem of the material transported in the conveyor. Repeated “rewinding” of the chain in the device will clean it from the medium residues. The self-cleaning function allows us to meet the stricter technological requirements, present in the transport of various materials with one conveyor – especially appreciated in feed mixing plants, forwarding points and seed industry.



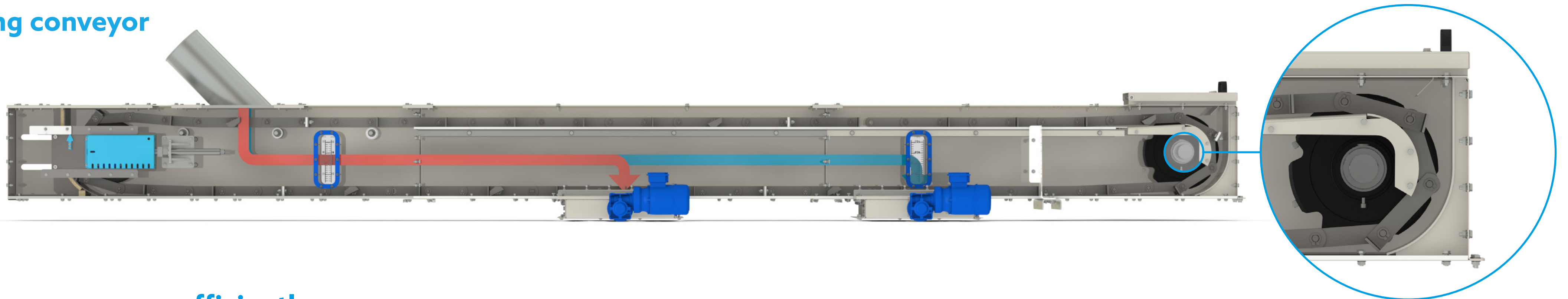
With upper transport deck

It is used in installations with a large amount of infeeds or in the case of outfeeds located before and after the infeed. Thanks to the use of a high double bottom, it is possible to transport the material through the upper deck towards the return station, where it falls to the lower bottom and is then taken to the drive station.

Transport of material on the upper deck



Self-cleaning conveyor



Use your conveyor more efficiently

The standard version of the chain conveyor could only transport material from the return station towards the drive station. There was a problem of the transported material deposited in the conveyor or having to transport the material in the opposite direction. To meet these challenges, we have created conveyors in the following versions: self-cleaning, with the upper transport deck.



Mobile conveyors.

Application

The mobile conveyor allows the trucks to be loaded without having to move them.

Construction

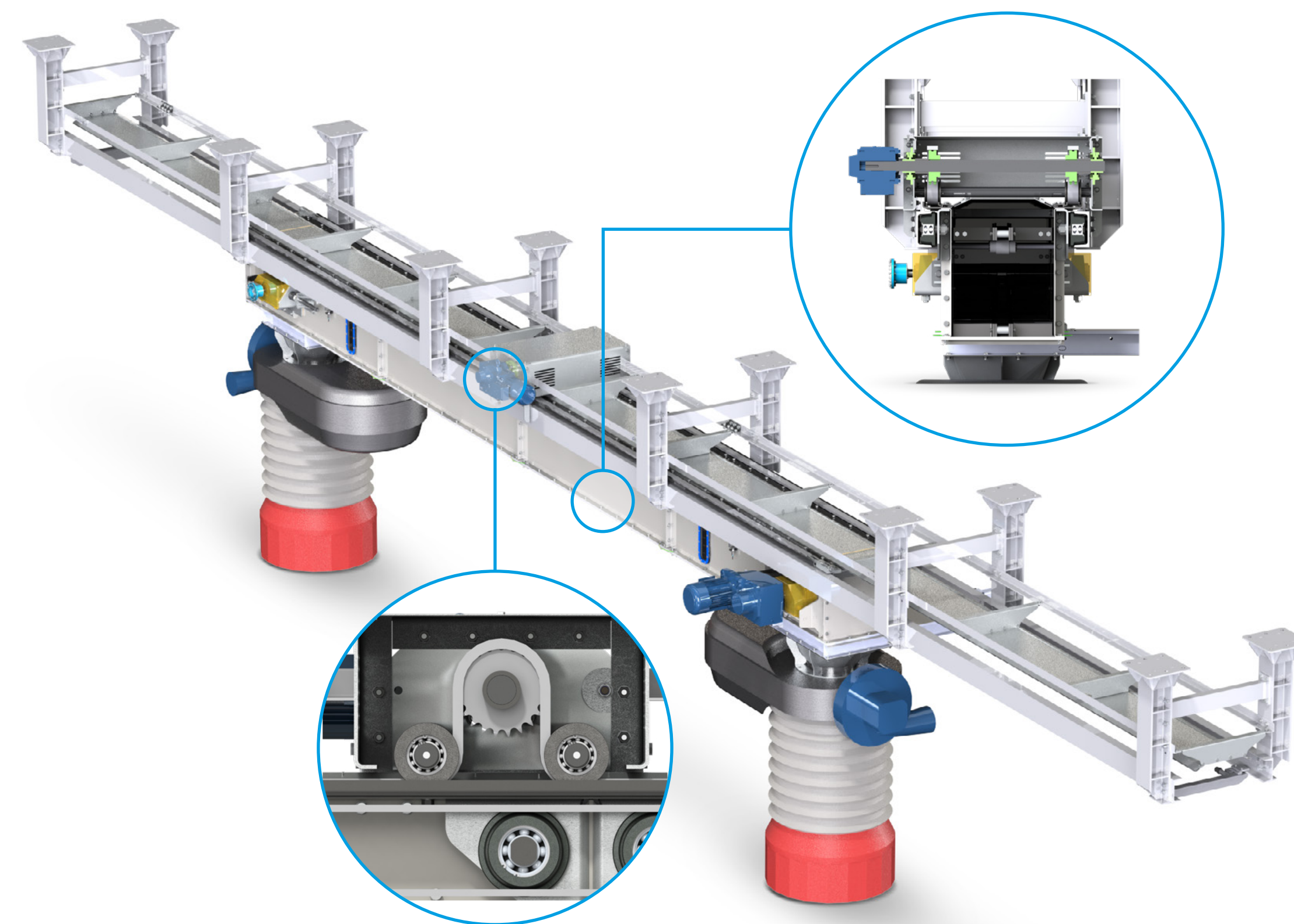
Stable construction of the drive system guarantees reliable operation for years. Thick cross-sections of the materials used throughout the machine ensure the rigidity of the structure and reduce the noise.

Loading method

The most effective method of loading U-shaped vehicles. Eliminate the need to move the vehicle during loading and use a shorter weighing facility.

Leading design solutions

- **Precise movement of the mobile conveyor** – thanks to use of a chain with a gear motor.
- **Safety at work** – double overfilling safety device and a reverse wheel movement sensor.
- **Dustproofing of the device** – thanks to double lip seal of the top cover.

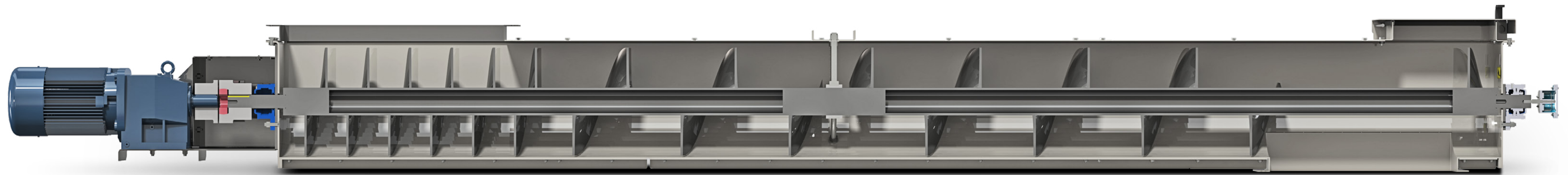


Conveyor length

The optimum length of the conveyor is 7 lm, however, this parameter can be adapted to any requirement on request. Adaptive design of the sleeves gives the possibility of smooth adjustment of their length to the height at which the conveyor can be suspended.



Screw (ribbon) conveyor.



Application

The screw conveyor is designed for precise transport and dosing of bulk materials. Designed, among other things, to collect materials from tanks.

Construction

The device has a modular design, which allows it to be easily installed and moved to its destination. The standard solution is to use a coupling in the drive system, which allows to eliminate the adverse drive vibrations. A ribbon with different pitch is also used, which allows for initial material expansion in the conveyor body.

Characteristics

The conveyor can be made in version with u-shaped or tubular body. The capacity of conveyors from our offer ranges from 5 to 120 t/h.

Additional benefits

- **Bearing-mounted ribbon support** – increases the rigidity of the conveyor system.
- **Easy replacement of external and internal bearings** – decoupled drive and the modular design of the conveyor allow a quick replacement of the ribbon gear.
- **Safe operation of the conveyor** – thanks to the motion sensor on the worm screw and overfill sensor on the flap in the outfeed module.

Plate conveyor chains.

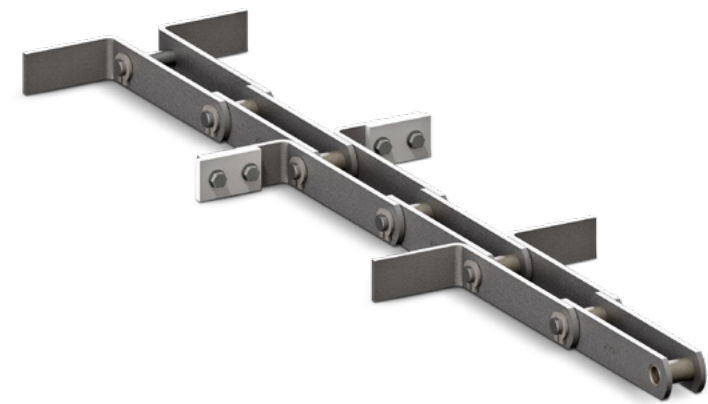


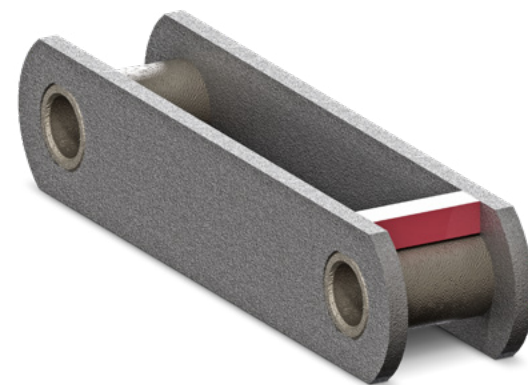
Plate conveyor chain with cleaning strips

Standard chain, equipped with PE strips mounted on every fifth arm.



Plate conveyor chain with scraping buckets

Scraping buckets are used in self-cleaning versions. Their task is to take the material out of the drive station and lift it towards the return station. Installed at 0.96/1m per 15 lm of the chain.



Scraping block

The scraping block prevents the material from sticking in the space between the chain flat bars. The blocks are optionally mounted at a spacing of 1 piece per 4.8 lm of the chain.

Advantages

- **Reliability** – made of suitable steel grades that meet the requirements of DIN 8165.
- **Savings** – a wide range of sizes and pitches allows you to indicate the optimum chain size for your applications. The result is an improvement in the energy balance of the device and a reduction in the costs of operating repairs.
- **Durability in operation** – sleeves and pins are subjected to a careful thermo-chemical treatment which results in the actual hardness of 60 HRC. In order to extend their durability, they are protected against turning.
- **Quality** – each of the 20 chain sizes is equipped as standard with a cleaning strip for the corner space of the trough, which is made of durable and wear-resistant PEHD1000 plastic. Additionally, the strips act as a spacer between the scrapers and the side of the trough.



Equipment for feed plants, mills and elevators are in constant contact with grain dust, which, when achieving certain concentration, can create an explosive atmosphere.

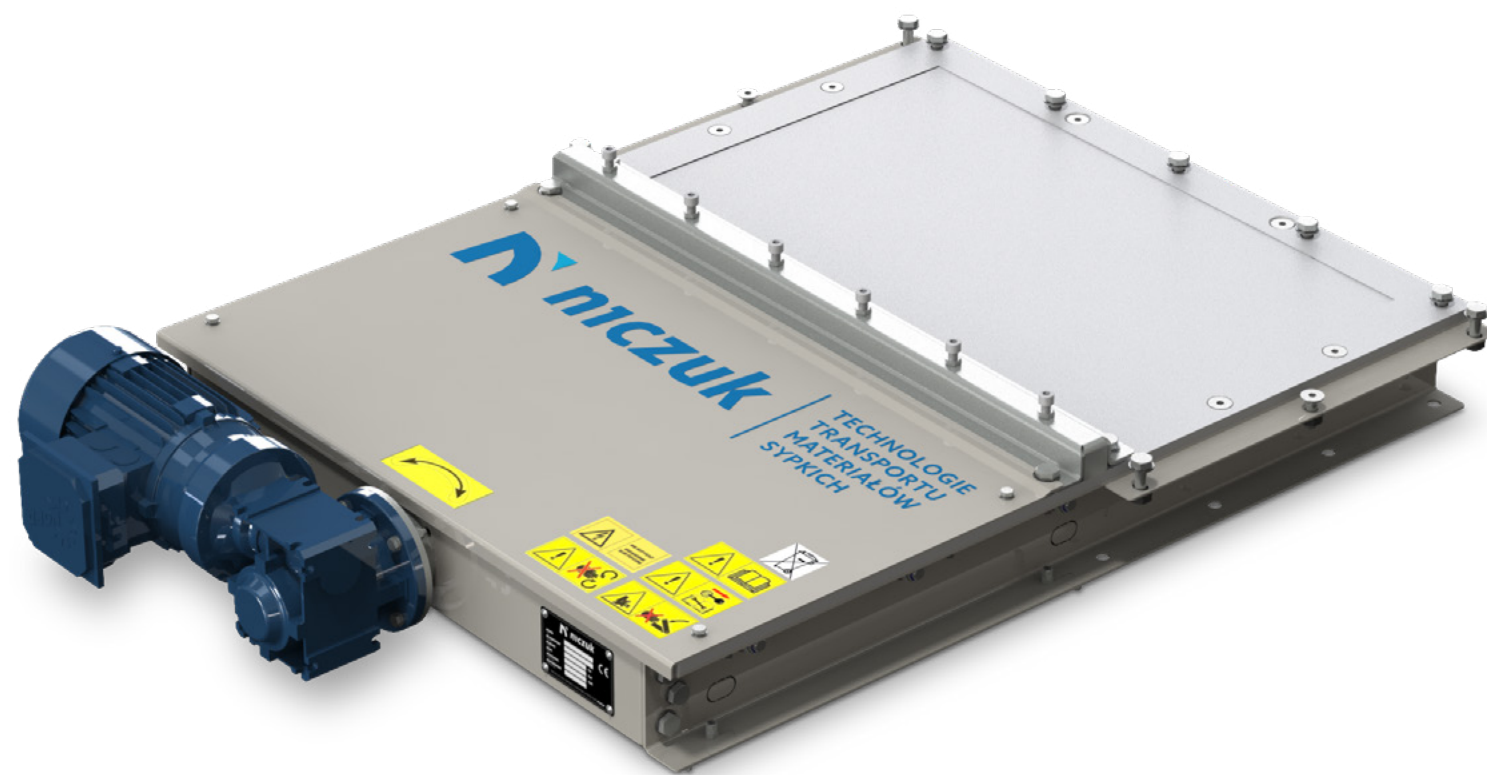
In order to reduce the risk and improve safety, THALE (owner of the NICZUK brand) has introduced conveyors, hoists, slide gates and distributors that can operate in Ex 3D (zone 22) and 2D (zone 21) zones.

In NICZUK devices, such solutions include sensors and Ex drives, bearings mounted outside the dust zone, explosion relief systems. Each device designed to work



Redler / silo outlet slide gates.

Redler outlet slide gates

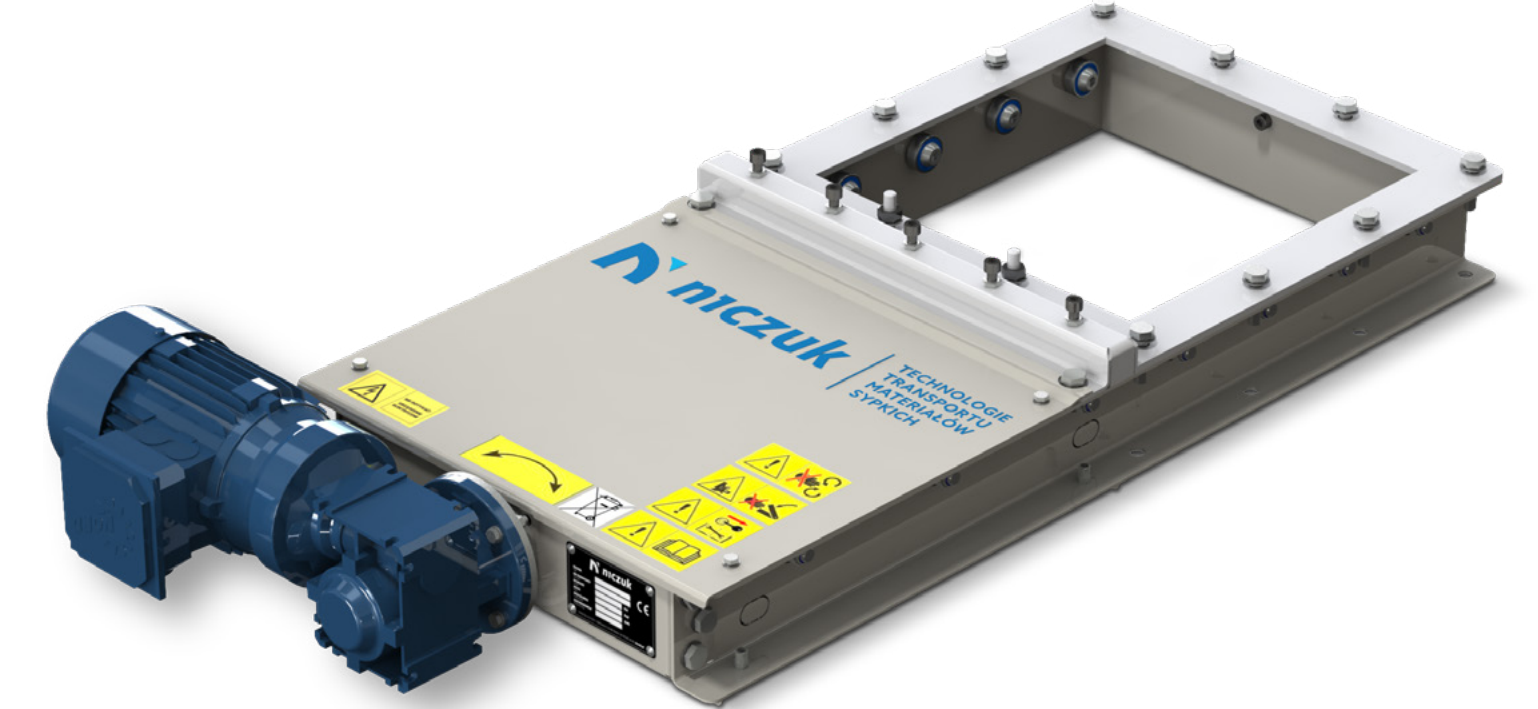


Electric slide gates controlled by Nord or Sew engine with inductive sensors.



Pneumatic slide gates, controlled by Hafner or Festo actuator equipped with reed sensors.

Silo outlet slide gates

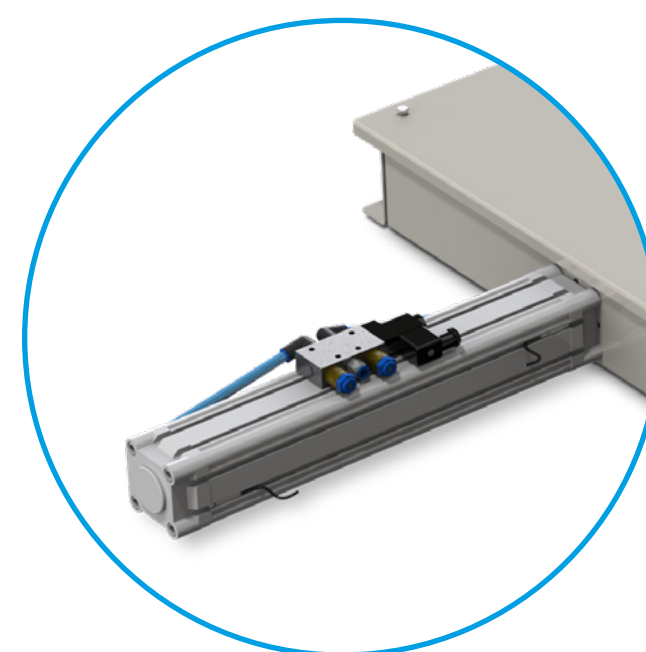


They are used at silo outlets. Equipped with a double-sided damper clamp eliminating the problem of dusting.



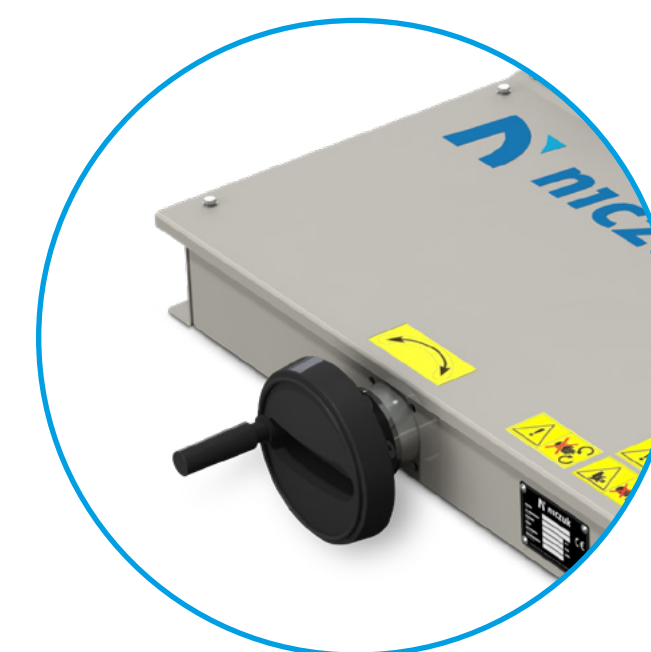
ZPR-E | NZZ-E

electric drive*



ZPR-P | NZZ-P

pneumatic drive**



ZPR-R | NZZ-R

manual drive

* NORD or SEW

** FESTO or HAFNER

Construction

The slide gate frame is made of molded sheet metal, previously cut out with the laser. The slide gates drive can be manual, electromechanical or pneumatic. Redler slide gates (ZPR) are made according to the series of produced conveyors (redlers). The redler outlet slide gate damper is lined with 10 mm thick PEHD material forming a single plane with the bottom of the conveyor.

Special orders

There is a possibility of making a custom-made slide gate with a dimension adapted to the local conditions of the facility.

Advantages

- **Master dust-tightness** – the long-term dust-tightness of the drop plate is guaranteed by compensation of wear and pressure of the upper and lower sealing panel.
- **Robustness** – guarantees reliability for many years.
- **Energy-efficient use** – achieved by using composites, eliminating excessive frictional resistances.
- **Reliable design** – manual and electric control utilizing a screw with trapezoidal thread and a special nut made of bronze, which prevents blockage of the slide gate damper.
- **Smooth running** – the locking plate with ball-bearing mounted guides prevents blockages due to dust and clogging.



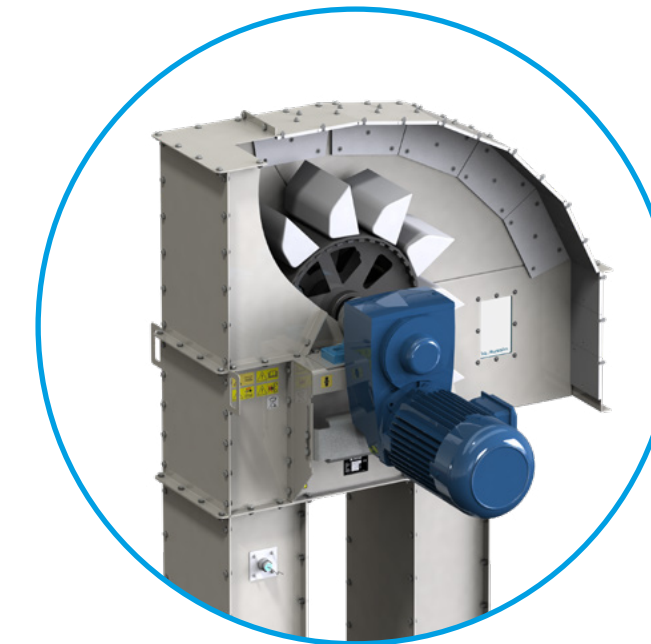
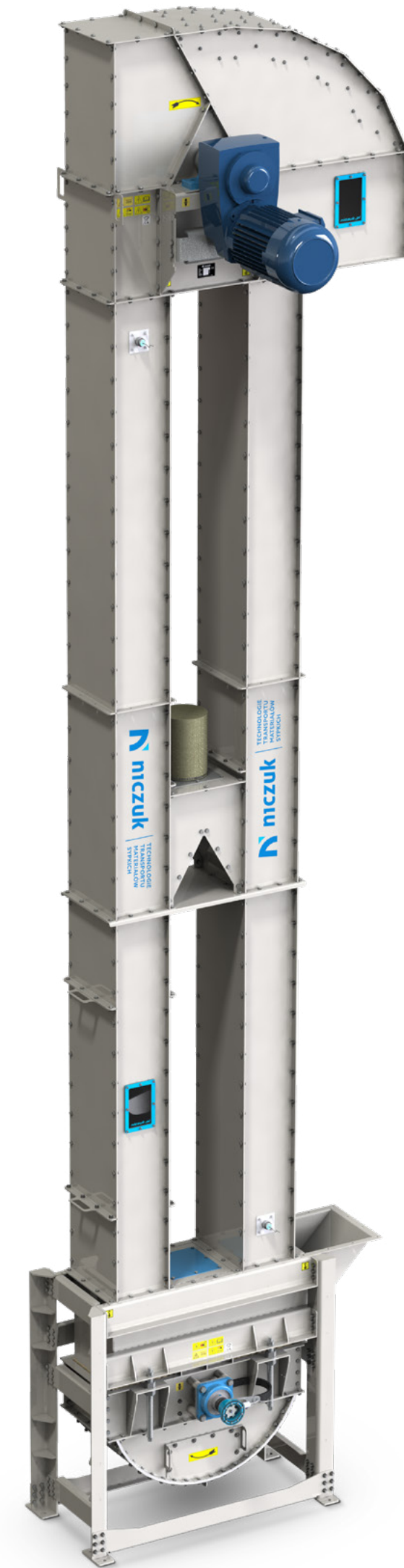
Elevators

Application

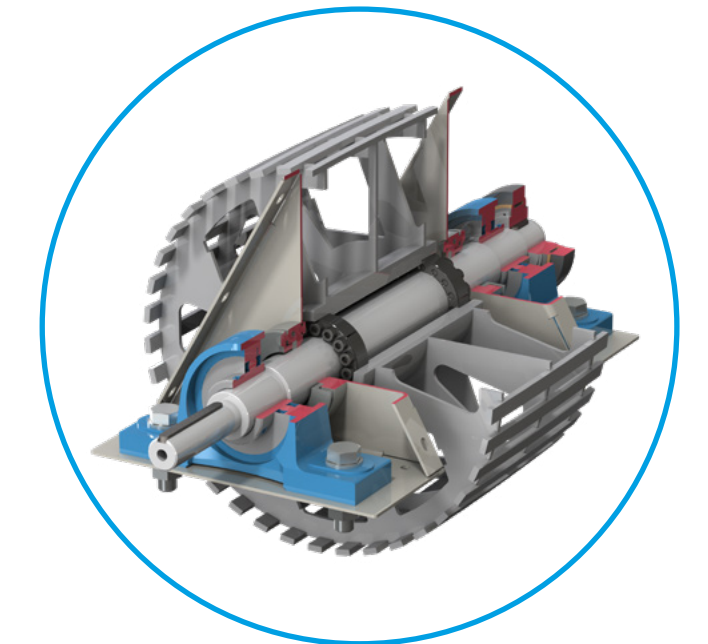
The bucket elevator is used for vertical transport of material: grain, pulses and oil seeds, fodder, biomass and other loose materials.

Leading design solutions

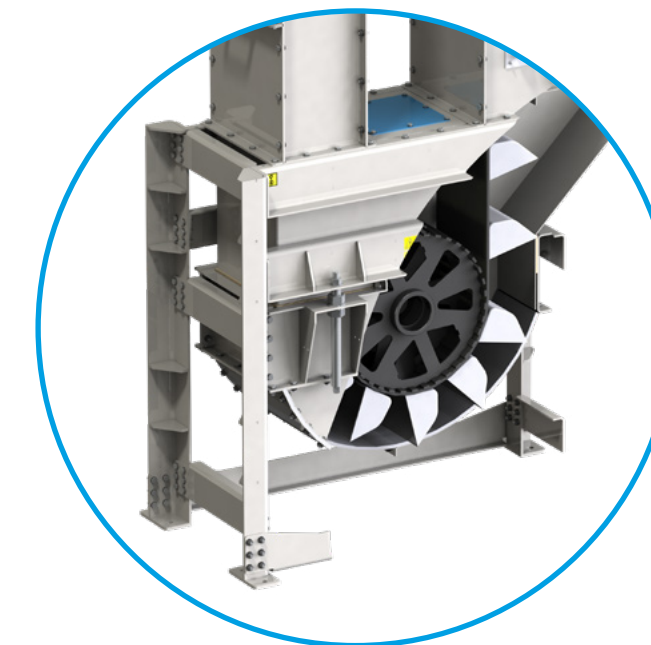
- **Elevator wheels** – perforated, prevent the material from sticking. The lower drum is equipped with kick plates that remove material from inside the wheel. The design significantly reduces damage to the raw material as well as belt and bucket assembly.
- **Elevator belts** – adapted to the specifics of the transported material, supplied by renowned manufacturers such as VAV, Stiff, Muhler Beltex. In antistatic, oil-resistant or resistant to acids added to feed designs.
- **Access to the elevator** – the design of the elevator takes into account the need to clean the device and the possibility of access to its interior. Each elevator is thus equipped with 2 inspection windows, a set of control tubes, a split head. In order to meet your requirements, we can make a device with more service pipes and additional cleaning hatches – see foot below.



Head



Elevator wheel



Foot



Standard foot with cleaning hatches



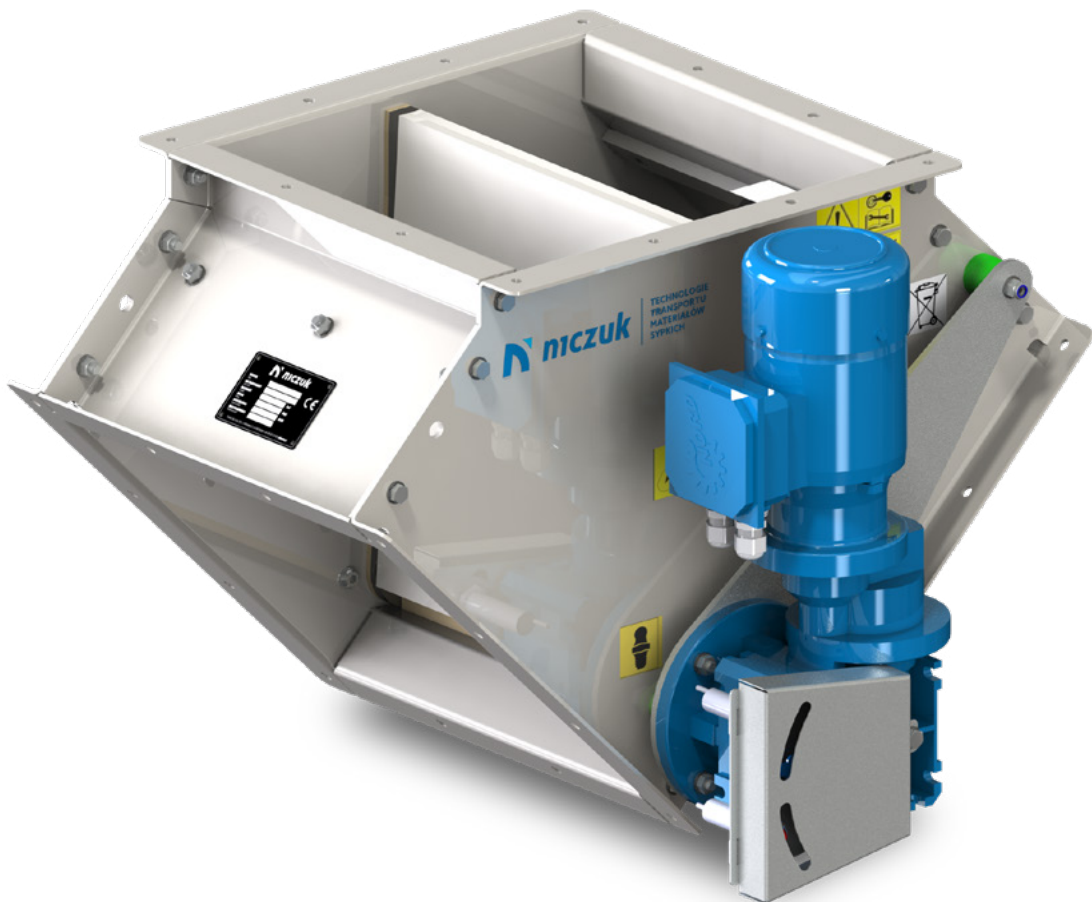


Distributors.

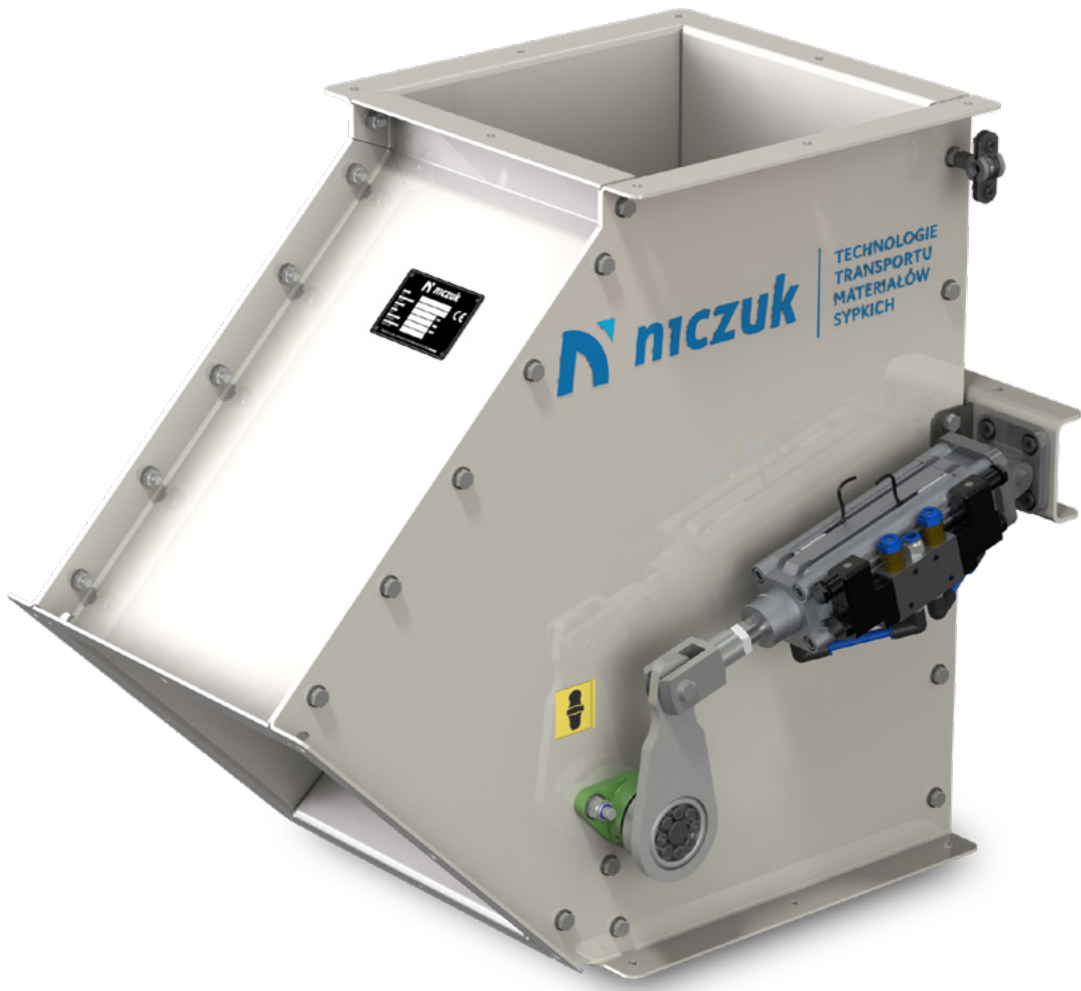


Customized distributors
for work in Ex 21D dust
explosion hazard zones.

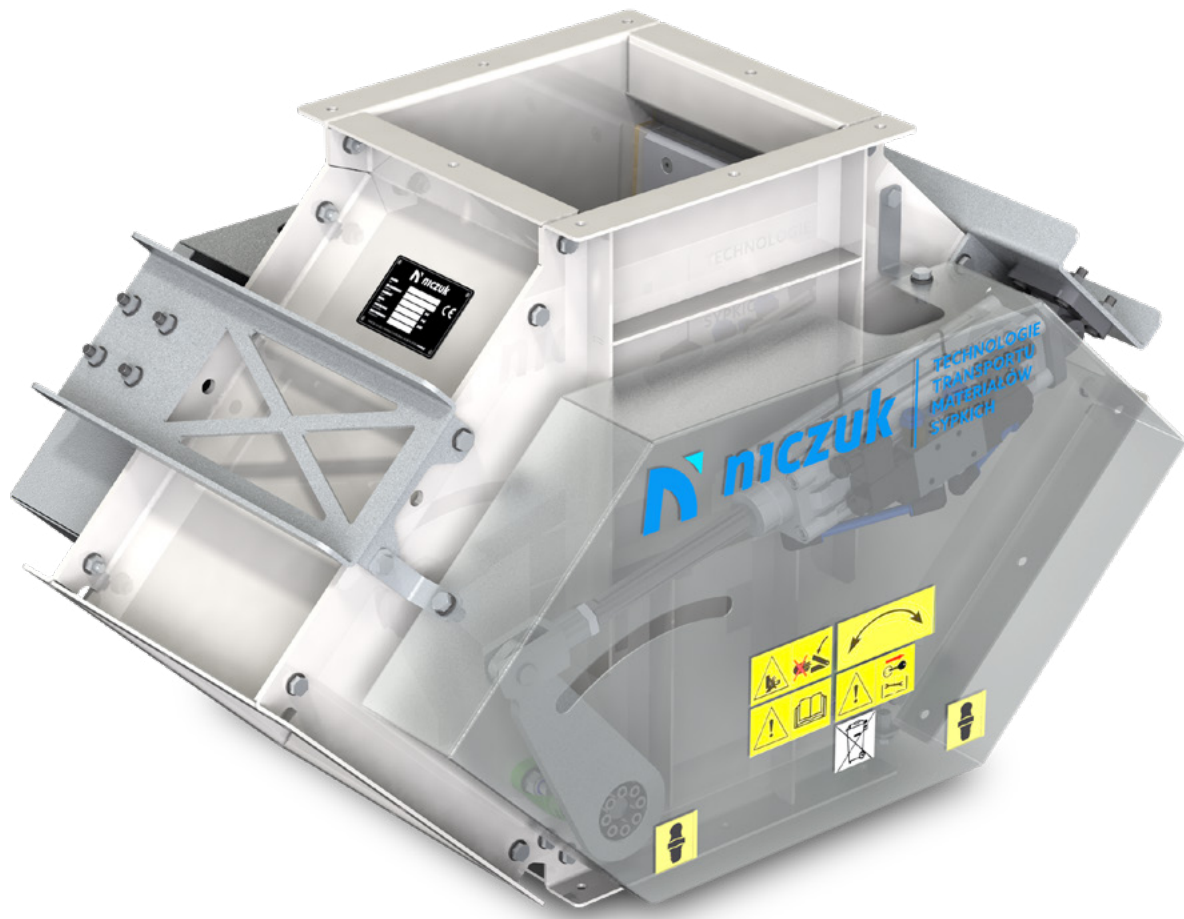
Distributor types



RDA-E | RDS-E



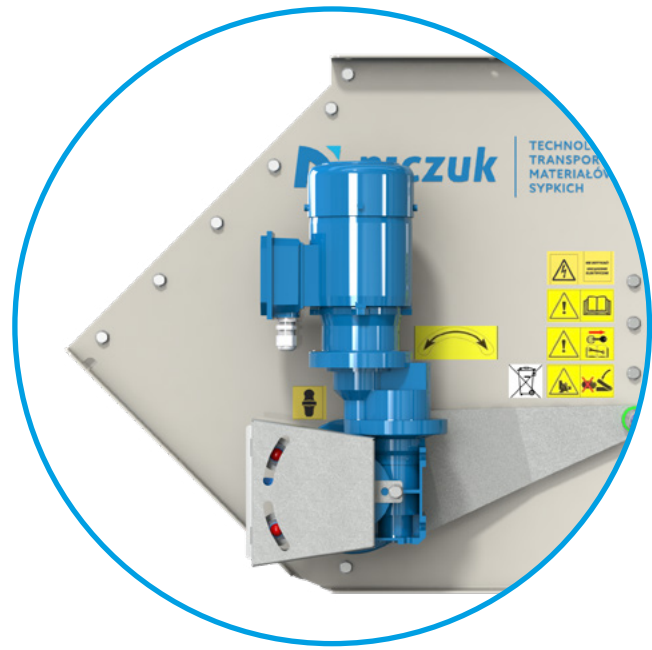
RDA-P | RDS-P



RDA-R | RDS-R



Control versions



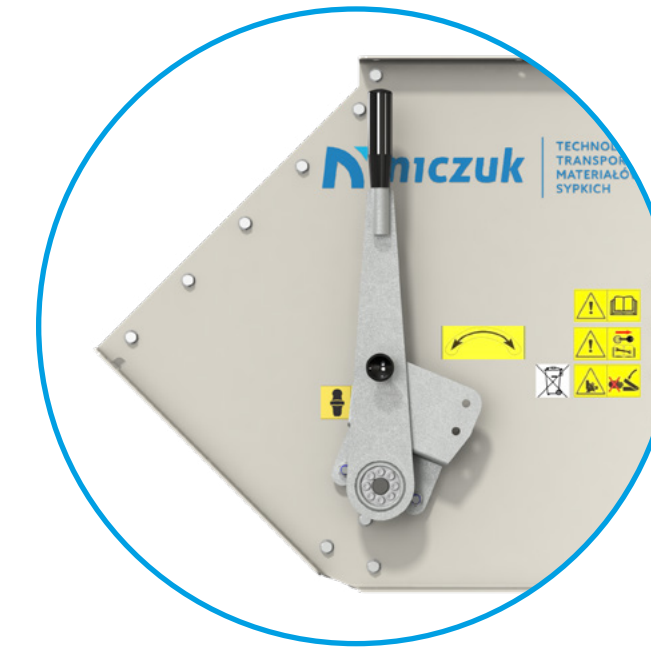
RDA-E | RDS-E

electric drive*



RDA-P | RDS-P

pneumatic drive**



RDA-R | RDS-R

manual drive

* NORD or SEW

** FESTO or HAFNER

Characteristics

The product is available in a symmetrical version with an angle between outfeeds equal to 90° and an asymmetrical version with an angle of 45°.

The design of the distributor enables the replacement of internal seals, the partition plate (flap) and axles.

Advantages

- **Higher workmanship culture** – The use of laser cutting technology guarantees dimensional repeatability.
- **Dismantable design** – enables easier and faster flap replacement, maintenance and repair.
- **Spare parts catalog** – possibility to replace worn parts.



PE 1000 plastic-lined distributors



We have developed a special solution for operation in areas particularly vulnerable to rubbing. If you are aware that the distributor will work continuously or will be subjected to greater material friction and you are afraid of the sides rubbing too quickly, choose a plastic lined distributor on all walls. Reduce the downtime caused by the side or flap rubbing.

Infeed and outfeed fittings



The distributor can be equipped with infeed and outfeed fittings. They are used to connect the distributor with material transport pipes. They can be finished with a flange, a KMH clamp or a tube to be welded in.

We can make other connections on request.

We offer over 100 types of fittings adapted to the conditions on site.





GREETINGS FROM POLAND.

Contact us:

📞 +48 606 822 257 ✉️ przenosniki@niczuk.pl

THALE Sp. z o.o. Sp. k. | Wilimowo 2 | 11-041 Olsztyn | Poland

Phone no. +48 89 521 19 69

